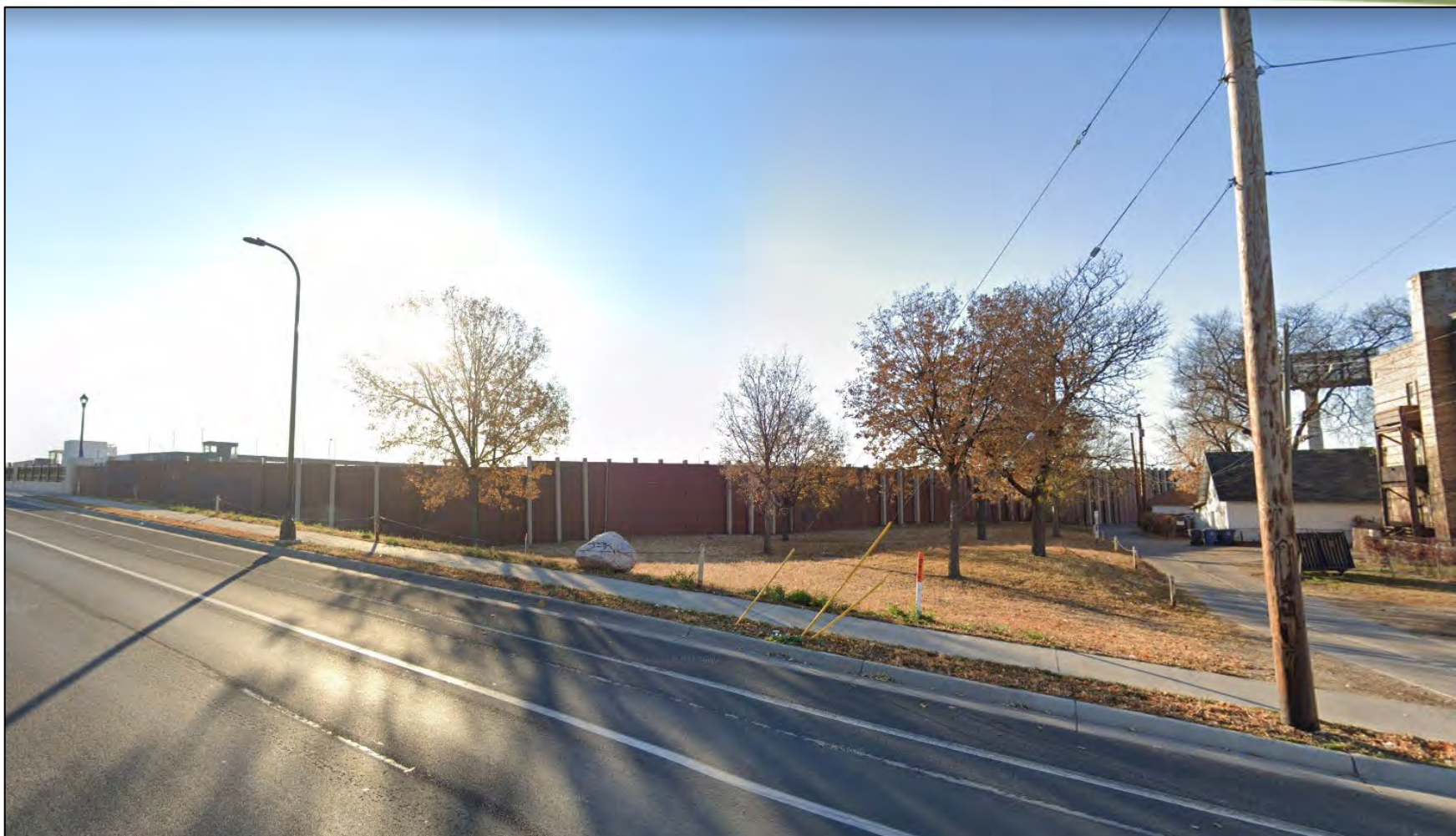




Park Improvement Projects Update

Whittier Alliance

3-21-2023

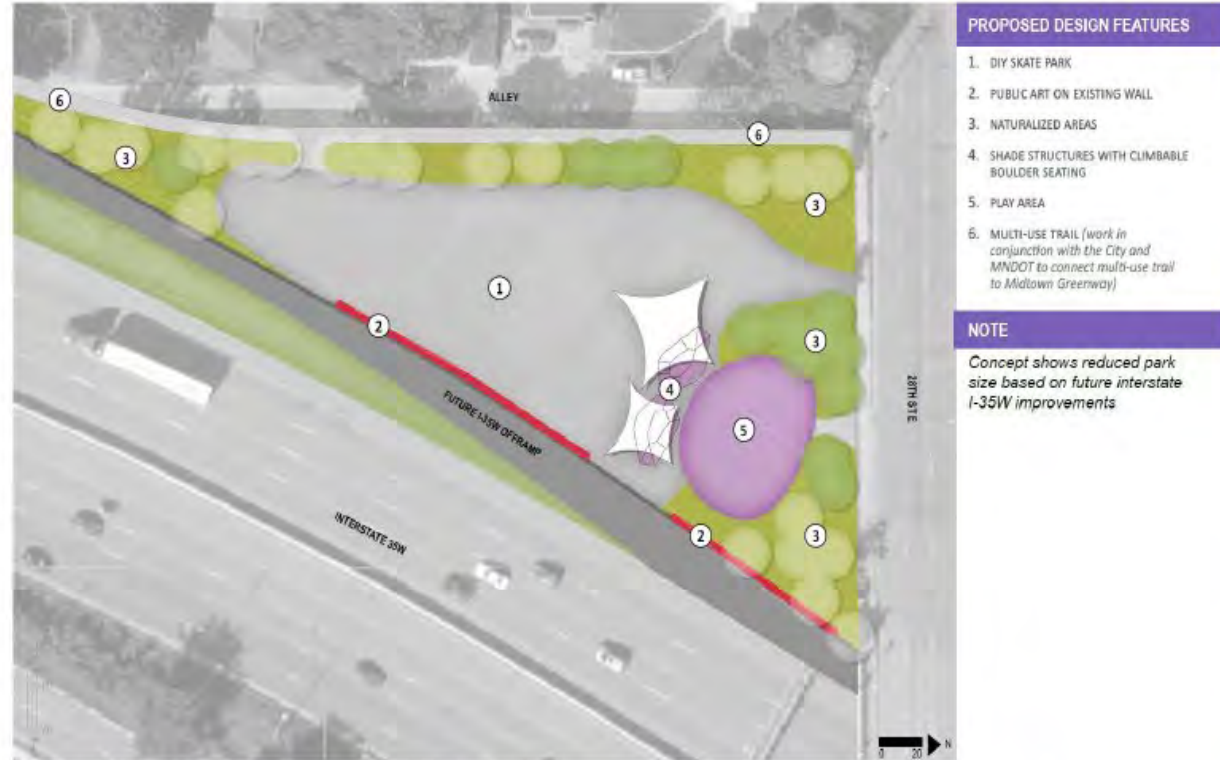


28th Street Tot Lot Park Improvements



Minneapolis
Park & Recreation Board

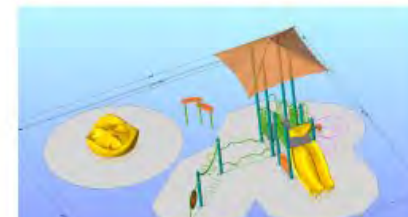
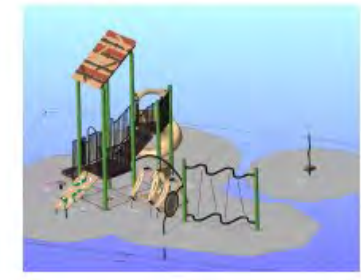
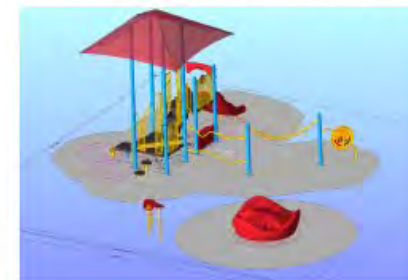
Approved Park Master Plan



Examples of Skate Park Features



Examples of Play Features & Layouts



Examples of Public Art Treatments, Features, and Fencing





3. What skate features are you most likely to use?



Peanut Bowl



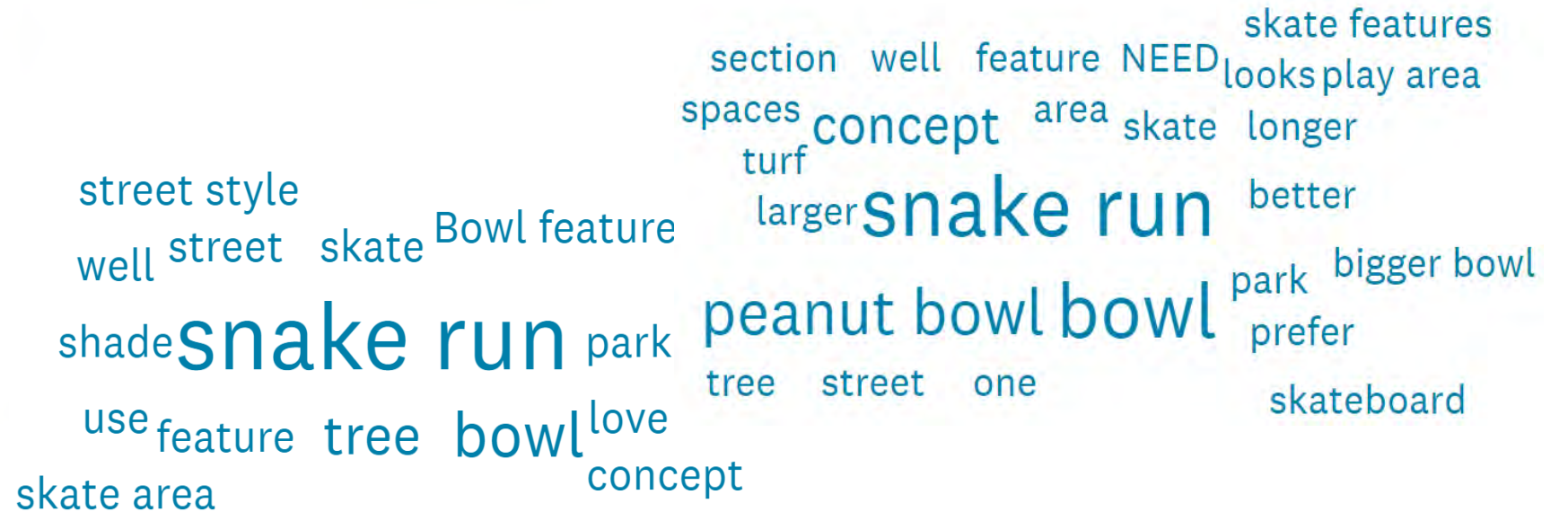
Snake run skate trail



Bowl



Street style features

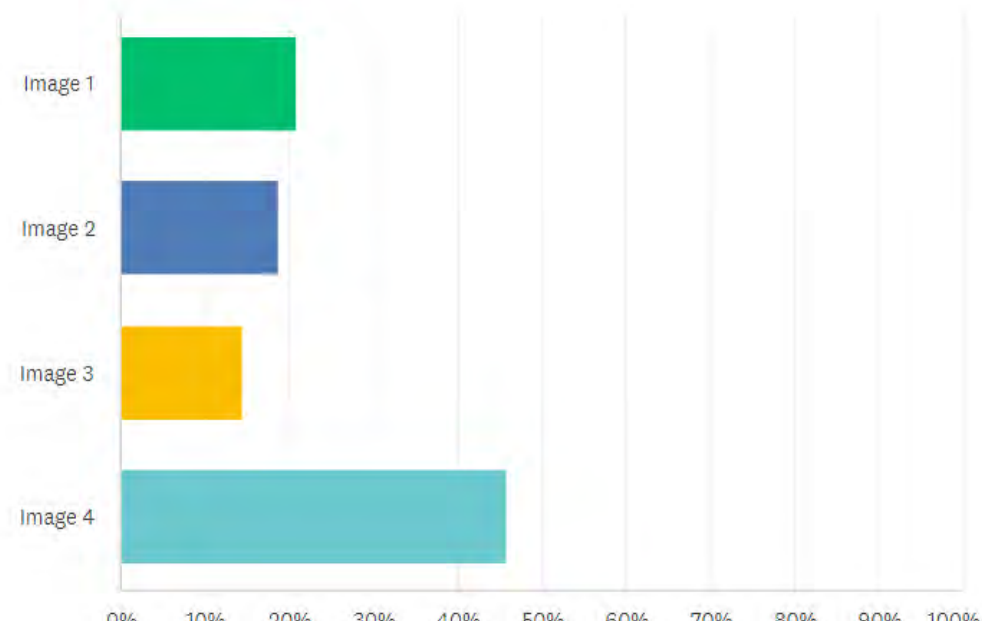


6. What type of play structure do you like best?



What type of play structure do you like best?

Answered: 48 Skipped: 21

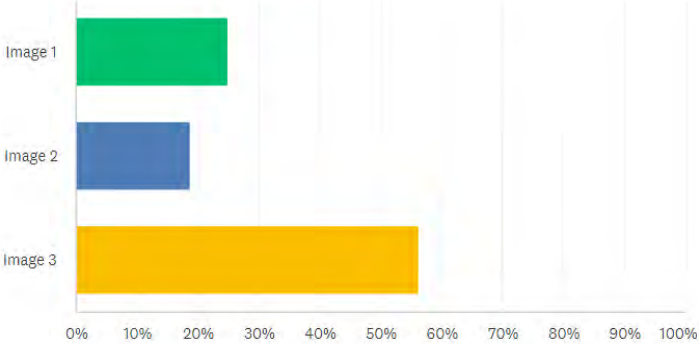


8. What type of slide do you like best?



What type of slide do you like best?

Answered: 48 Skipped: 21



9. What types of freestanding play features do you prefer?



Spinner



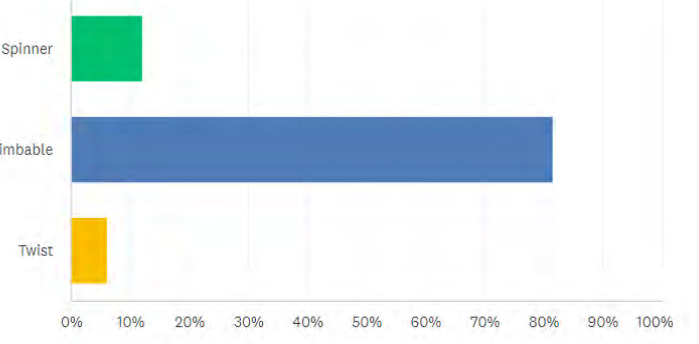
Climbable



Twist

What types of freestanding play features do you prefer?

Answered: 49 Skipped: 20





Proposed Design Features

1. Paved Park Entry with Furnishings
2. Park Entry Sign
3. Play Area with Benches
4. Safety Fencing
5. 'Snake Run' Skate Feature
6. 'Peanut Bowl' + Bowl Skate Feature
7. Street Style Skate Feature
8. Naturalized Landscape Plantings & Stormwater Treatment
9. Climbable Boulder Seating
10. Picnic Seating
11. Remove Existing Tree



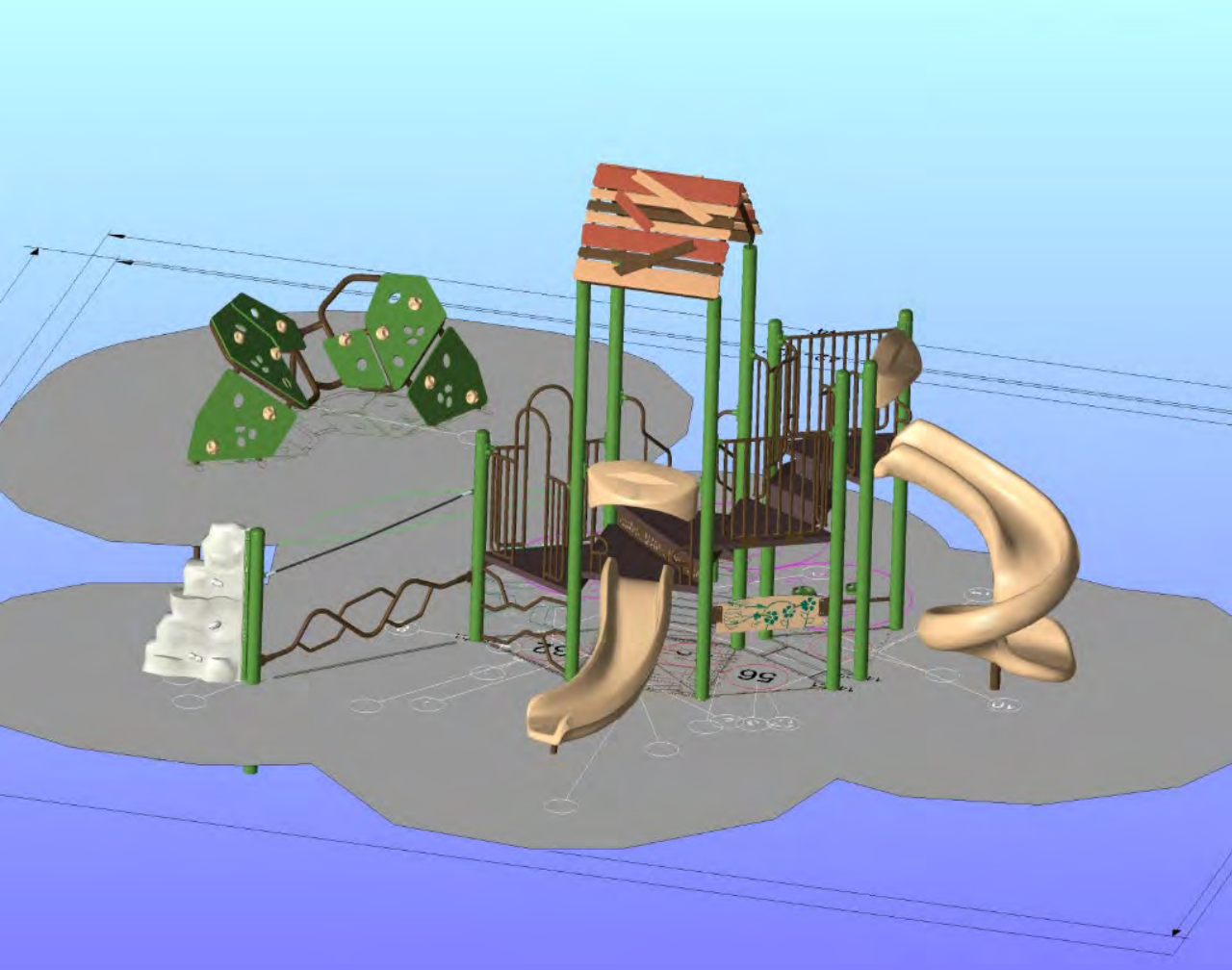
Example 'Snake Run' Features



Example 'Street Style' Features

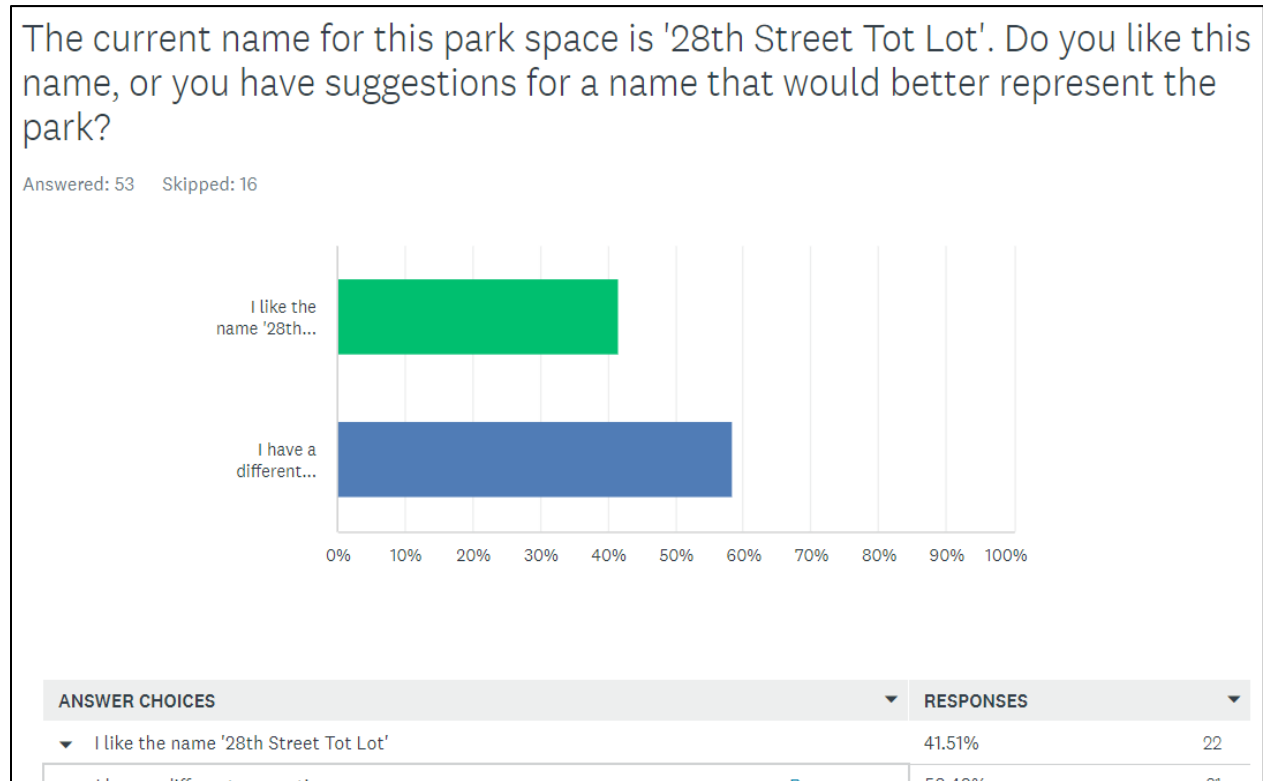


Example 'Peanut Bowl' Feature



Skate 28
 28th Street Tot Spot
 The Wedge Park
 Skater Tot Park
 Skatey Mcskatepark
 28th St Play Park
 Dinosaur Park
 28th Street Park
 Oasis Park
 Skate Corner
 Corner Skate Park
 28th Skate
 City of Skate Snake Bowl
 Scalene Triangle Park
 Two Eight Park
 35W Skate Park

Mansion Bend Playground and Skatepark
 Anything but Tot Lot x 5
 28th Street Lot
 Junkyard Dogs Against Gentrification
 KGod Park
 28th Park & Skate
 28th & 35 Park
 Whittier Adventure Park
 Whittier Skate Park
 28th Street Bowl
 Tyre Nichols Park





28th Street Tot Lot Park Improvements Project Update

Whittier Alliance

3-21-2023

Carol HejlStone

Design Project Manager, MPRB

phejlstone@minneapolisiparks.org

612-230-6454

WHITTIER PARK IMPROVEMENTS

2022 - 2024



Project Design Managers:
Bianca Paz | bpaz@minneapolisparcs.org
Francisca Pass | fpas@minneapolisparcs.org
MPRB Planning Division



CLINTON FIELD PARK IMPROVEMENTS 2023 - 2024/25



WHITTIER PARK IMPROVEMENTS

MASTER PLAN



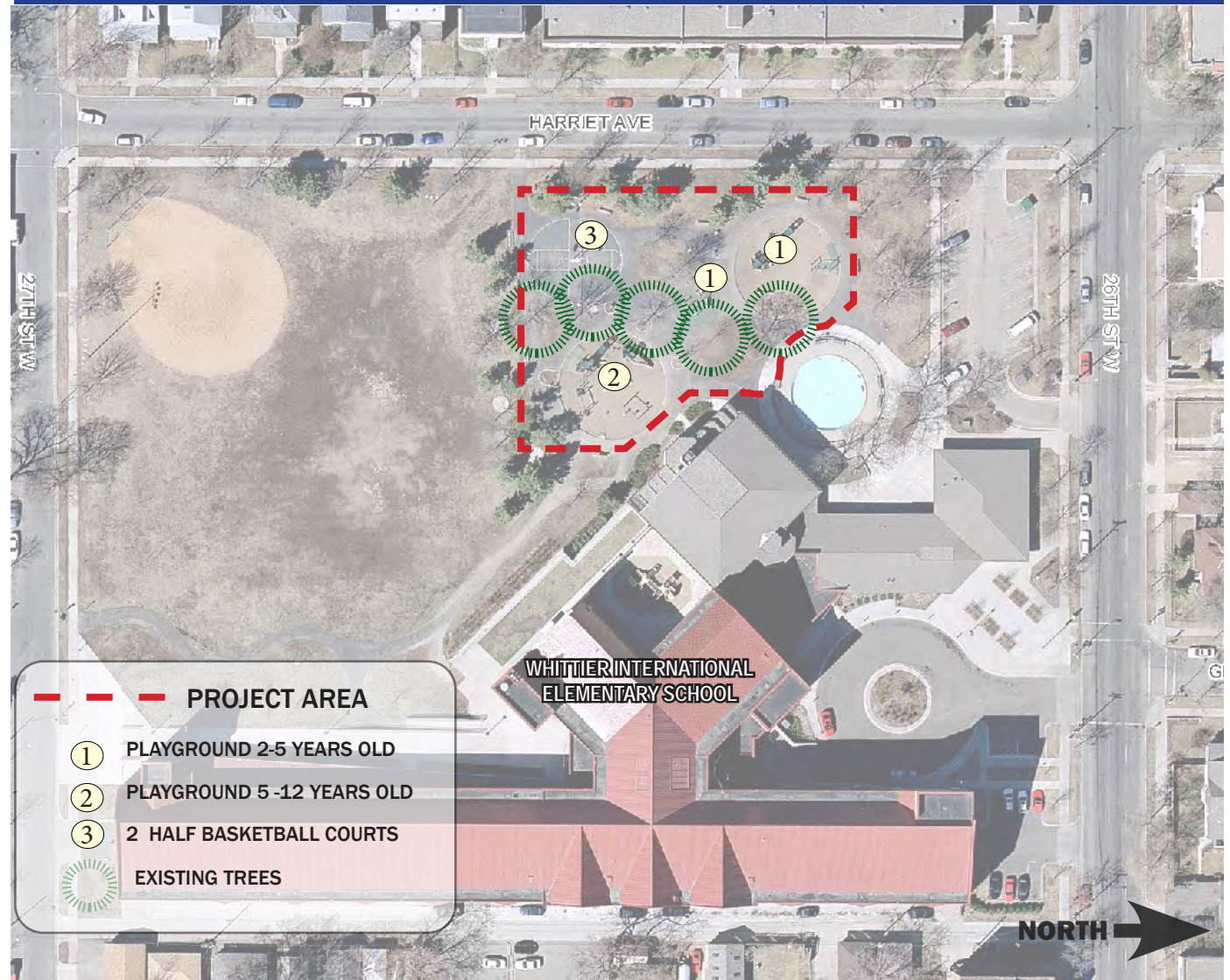
PROPOSED DESIGN FEATURES

- | | |
|--|---|
| 1. BERM WITH NATURALIZED PLANTINGS | 8. CLIMBING WALL |
| 2. MULTI-USE DIAMOND WITH BACK STOP (consider removing ag lime) | 9. MULTI-USE SPORT COURT (lined for futsal and two half-court basketball) |
| 3. UPDATED MULTI-USE FIELD | 10. UNIVERSAL PLAY AREA WITH ACCESSIBLE SURFACING |
| 4. PICNIC SHELTER | 11. SHADE STRUCTURE |
| 5. PICNIC SEATING AREA | 12. SPLASH PAD |
| 6. OPEN PLAY AREA | 13. PARKING LOT REMOVED |
| 7. IMPROVED CONNECTION TO SCHOOL (including seating, gathering, and flood mitigation area) | 14. URBAN AGRICULTURE ZONE |

EXISTING FEATURES

- A. ADA PARKING
- B. ENTRY PLAZA TO THE BUILDING
- C. RECREATION CENTER
- D. WALKING PATH
- E. SLEDDING HILL

EXISTING CONDITIONS - PROJECT AREA



Funding: NPP20 & CIP : \$1,256,800

Scope: Playground Update & Multi-Use Court

Proposed Timeline:

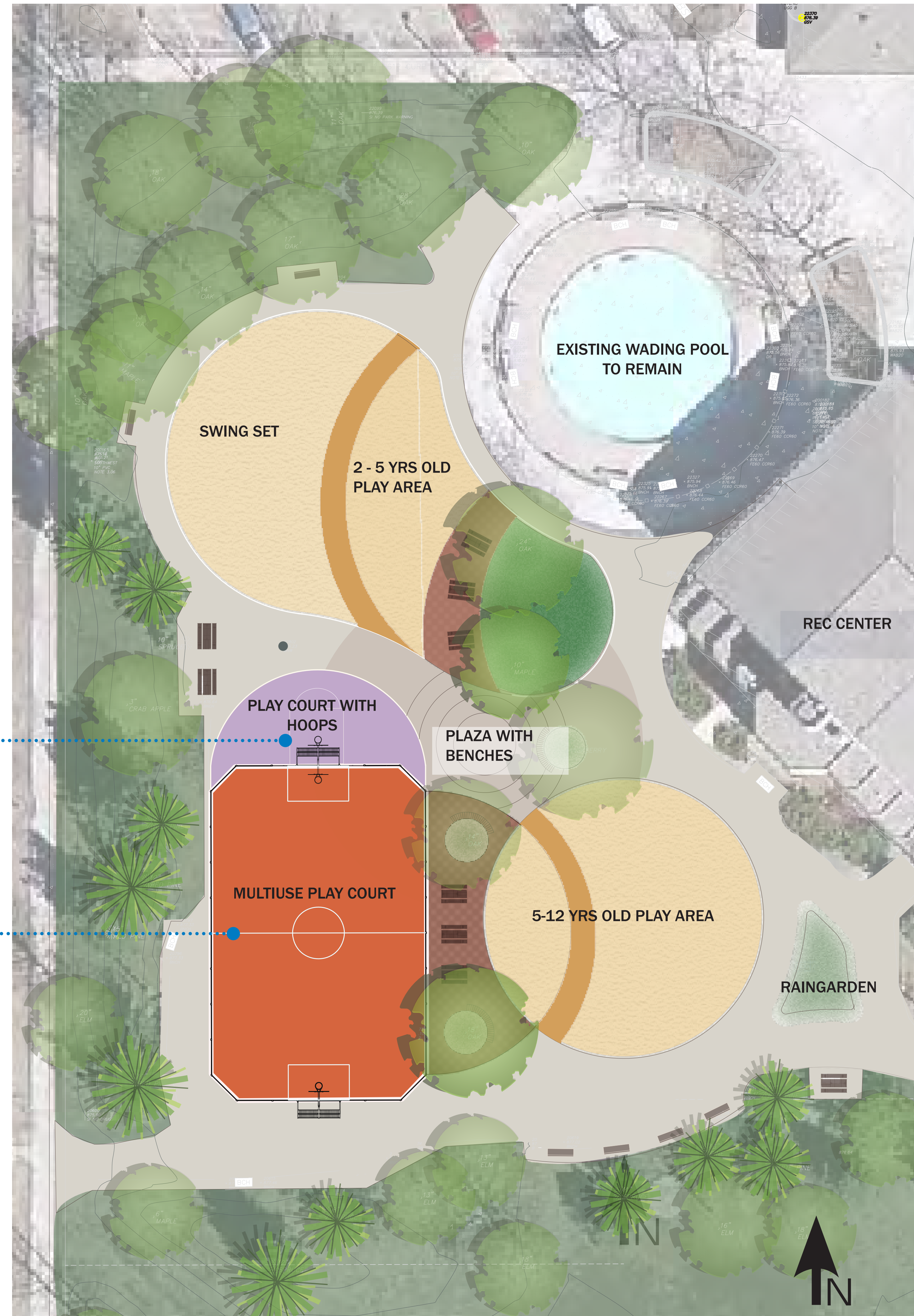
- **Community Engagement: Summer 2022- Winter 2023**
- **Design Development: Feb - April 2023**
- **Bidding: Summer 2023**
- **Construction: Summer 2024**
- **Playground Opening: (Anticipated) Fall 2024**

PROPOSED IMPROVEMENTS

OPTION A - MULTIUSE COURT (MINI PITCH)



MULTIUSE MINI PITCH EXAMPLES



What do you like about the playground and plaza seating area?

What do you like about the multiuse court and additional hoop?

What would you change or add to this option?



OPTION B - MULTIUSE COURT (NON-TRADITIONAL)



What do you like about the playground and plaza seating area?

What do you like about the oval multiuse court and seating wall?

What would you change or add to this option?

CLINTON FIELD PARK IMPROVEMENTS

MASTER PLAN



PROPOSED DESIGN FEATURES

1. PICNIC SHELTER
2. TERRACED LEVELS *(to allow views from the shelter down to the street)*
3. PICNIC AREA WITH FLEXIBLE SEATING
4. NATURALIZED AREAS
5. OPEN PLAY SPACE
6. COMMUNITY GARDEN/URBAN AGRICULTURE ZONE
7. FULL COURT BASKETBALL (1)
8. MULTI-USE SPORT COURTS (2)
9. NATURALIZED PLANTING *(raingarden)*

NOTE:

PARK IS RE-GRADED INTO 3 LEVELS, FROM SHELTER AT HIGHEST TO SPORT COURTS AT LOWEST. ALLOWS REMOVAL OF EXISTING BORDER FENCING.

EXISTING FEATURES

- A. PLAY AREA
- B. STAIRWAY
- C. ENTRY PLAZA WITH SEAT WALL AND PARK SIGN

EXISTING CONDITIONS - PROJECT AREA



Funding: PARK DEDICATION : \$400,000

Scope: Multi-use courts (Futsal)

Proposed Timeline:

- **Community Engagement: Spring- Summer 2023**
- **Design Development: Feb - October 2023**
- **Bidding: Winter 2023**
- **Construction: 2024**